



Canterbury Junior School

UNIFORM GUIDE

All Junior School students are required to wear these uniform items below in this handy visual guide. Full information is covered in the **Uniform Policy** located on the Canterbury College website.



Formal Uniform:

- To be worn to and from school every day, other than HPE timetabled days for students in Prep - Year 4.
- Must include black leather shoes.
- Must include formal hat.
- In **winter** can be paired with:



Sports Uniform:

- To be worn to and from school on timetabled HPE days for Prep - Year 4.
- To be worn during lessons only for students in Years 5-6.
- Must include black sports-soled shoes.
- Must include:
 - Prep - Year 2: House bucket hat.
 - Years 3-6: Sports cap or House bucket hat.
- In **winter** can be paired with:



- For Aquatic Activities:



ACCEPTABLE FORMAL SHOE STYLES



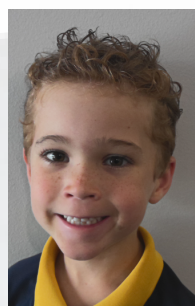
HAIR AND GROOMING GUIDE

Maintaining proper grooming and a neat appearance is more than just a matter of aesthetics. It plays a significant role in fostering a positive and focused atmosphere within the school community. We emphasise the importance of appropriate hair and grooming as this fosters:

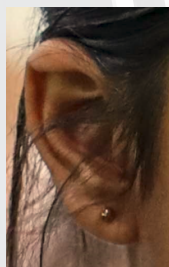
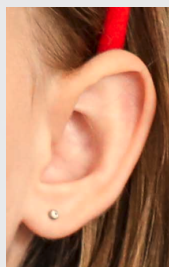
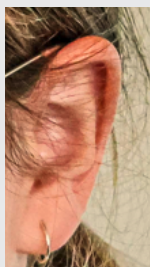
- Respect for self and others
- Reduced distractions
- Preparation for the future

Please see below examples of appropriate hair and jewellery styles for Junior School.

Appropriate Hair Styles:



Appropriate Earring Styles:



UNIFORM EXEMPTIONS

A Uniform Policy Exemption Form can be completed for students in situations where a religious, cultural or health requirement affects a student's ability to comply with the Uniform Policy.

Full information is covered in the **Uniform Policy** located on the Canterbury College website.